

FORM NO. FM-PUR-01

REQUEST FOR QUOTATION



TELEFAX :0091-40-27263021
TELEPHONE :0091-40-27260071
e-mail: puremsd@ecil.co.in

ENQUIRY No.EC/EMSD/PUR/2900/ 3795 /0923

DATE: 13.09.2013

DUE DATE: 23.09.2013

ELECTRONICS CORPORATION OF INDIA LIMITED
(A Govt. of India Enterprise)
Electronic Manufacturing Services Division
Industrial Development Area, Phase-II,
Cherlapally,
HYDERABAD – 500 051

PLEASE SUBMIT YOUR QUOTE IN SEALED ENVELOPE SUPERSCRIBING RFQ ENQUIRY AND DUE DATE BY POST / COURIER TO THE UNDERSIGNED. QUOTE YOUR BEST PRICE ETC., FOR THE FOLLOWING ITEM/S SO AS TO REACH US ON OR BEFORE DUE DATE AND TIME.

NOTE: QUOTATIONS RECEIVED THROUGH EMAIL / FAX WILL NOT BE CONSIDERED

1. LABOUR CHARGES TOWARDS MANUFACTURING OF BULK METAL BOXES FOR BALLOT UNITS AS PER DRG.NO.F01060-A3 – 20000 NOS.
2. LABOUR CHARGES TOWARDS MANUFACTURING OF BULK METAL BOXES FOR CONTROL UNIT AS PER DRG.NO.F01060-A3 – 13000 NOS.
3. SUPPLY OF HARDWARE REQUIRED, INCLUDING ALUMINIUM RIVETS, MS RIVETS, 10 GAUGE GI WIRE, SCREEN PRINTING MATERIAL. FABRICATION AND SUPPLY OF 4 NOS OF HANDLES WITH RUBBER SLEVE AND 2 NOS PAD LOCKS FOR EACH METAL BOX – 33000 NOS.

GENERAL TERMS AND CONDITIONS:

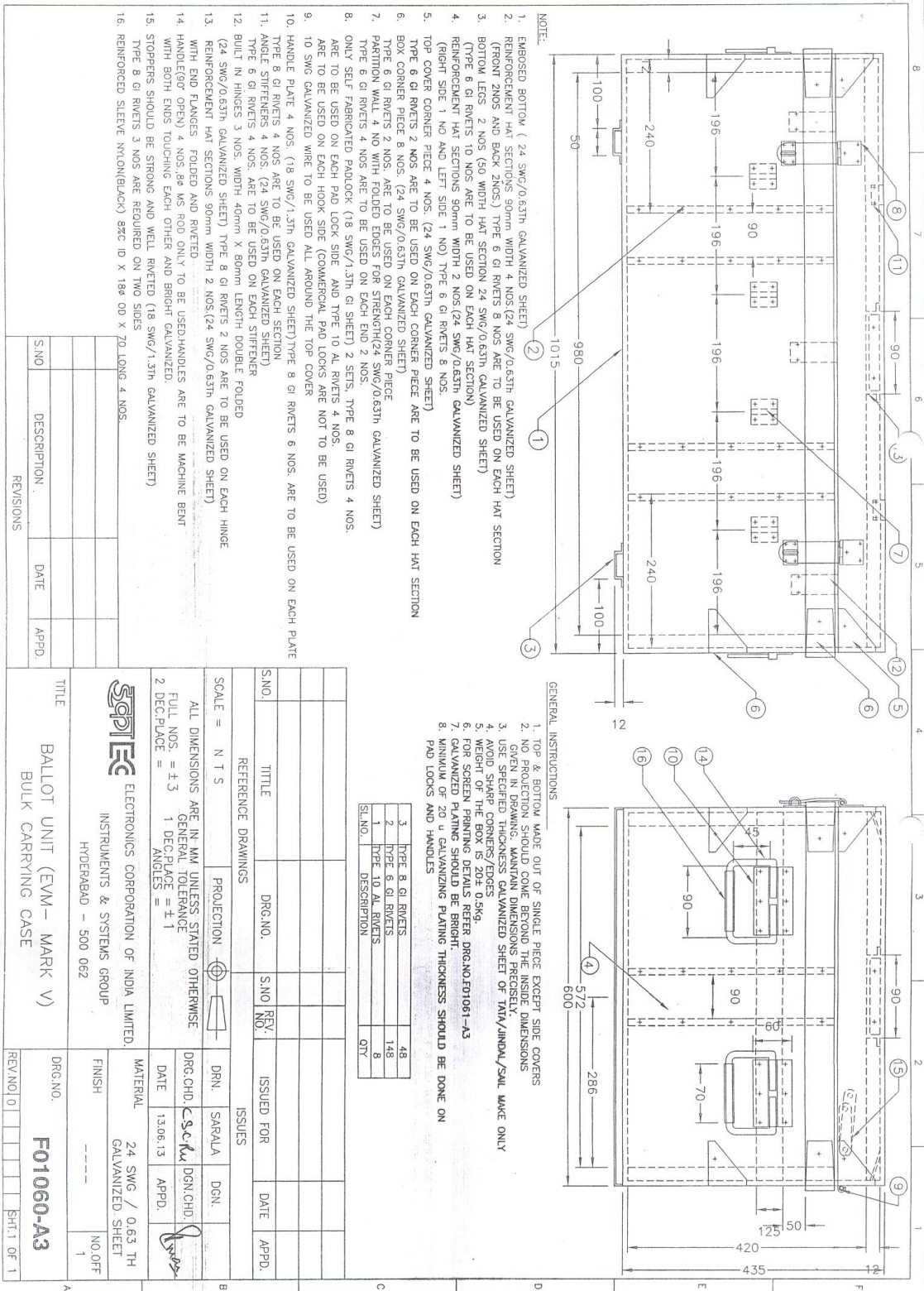
01. THE QUOTE IS TO BE SUBMITTED BY POST / COURIER DULY SUPERSCRIBING OUR REFERENCE OF OUR "REQUEST FOR QUOTATION".
02. OPENING OF TENDER:
THE BIDS WILL BE OPENED ON 24TH SEPTEMBER, THE TUESDAY AT 10 AM BEFORE THE BIDDERS PRESENT.
03. REG /ECC NO. ALONG WITH TARIFF HEADING, CST / TIN SHALL BE FURNISHED IN YOUR QUOTE.
04. THE PRICE QUOTED SHALL BE EXCLUSIVE OF DUTIES AND TAXES IF ANY. THE RATE OF DUTY & TAXES SHALL BE CLEARLY INDICATED.
05. THE ABOVE WORK, I.E. MANUFACTURING OF BULK METAL BOXES SHOULD BE CARRIED OUT AT ECIL-EMSD, HYDERABAD. FURTHER, THE REQUIRED GI PLAIN SHEETS WILL BE PROVIDED BY ECIL. HARDWARE, RIVETS, PADLOCKS, HANDELS ETC TO BE PROCURED BY THE SUPPLIER (ITEM-3 IS SUPPLIER SCOPE)
06. THE VALIDITY OF QUOTATION SHALL BE FOR A MINIMUM PERIOD OF 60 DAYS FROM THE DUE DATE OF THE TENDER SUBMISSION.

07. PAYMENT TERMS: STRICTLY 90 DAYS CREDIT TERMS. NO OTHER PAYMENT TERMS IS ACCEPTABLE.
08. THE DELIVERY PERIOD : COMPLETION OF THE ABOVE JOB SHOULD BE WITHIN 4 TO 6 WEEKS OR EARLIER FROM THE DATE OF PURCHASE ORDER.
09. ECIL RESERVES THE RIGHT TO SPLIT THE ORDER BETWEEN TWO OR MORE SUPPLIERS, BASING ON THE QUOTATIONS RECEIVED.
10. LIQUIDATED DAMAGES: IN THE EVENT OF ANY DELAY IN SUPPLY BEYOND THE STIPULATED DELIVERY SCHEDULE, LIQUIDATED DAMAGES WILL BE RECOVERED AT THE RATE 0.5% PER WEEK OF DELAY SUBJECT TO A MAXIMUM OF 10% OF THE VALUE OF THE ORDER.
11. FOR ANY OTHER CLARIFICATIONS PLEASE CONTACT SHRI K.P.REDDY, SENIOR MANAGER, EMSD, ECIL [MAIL ID: puremsd@ecil.co.in; PHONE No. 9949079313 / 040- 27260071]
12. RIGHT TO REJECT: ECIL RESERVES THE RIGHT TO REJECT ANY OR ALL OFFERS WHOLLY OR IN PART WITHOUT ASSIGNING ANY REASON.
13. SHORT CLOSURE: ECIL HAS THE RIGHT TO SHORT CLOSE THE TENDER EVEN AFTER EVALUATING THE QUOTATIONS WITHOUT ASSIGNING ANY REASON.
14. BANK DETAILS: THE BIDDERS SHALL GIVE ALONG WITH QUOTATION NAME OF THEIR BANKER, BANK ACCOUNT NO. AND ALSO INCOME TAX PERMANENT ACCOUNT NO. (PAN).

* * *



HIS DISCLOSURE IS THE PROPERTY OF THE ELECTRONICS CORPORATION OF INDIA LIMITED. SUBJECT TO RETURN UPON DEMAND AND WITH THE UNDERSTANDING THAT IT IS NOT TO BE REPRODUCED, COPIED OR USED DIRECTLY OR INDIRECTLY IN ANY WAY DETRIMENTAL TO THE INTERESTS OF THE ELECTRONICS CORPORATION OF INDIA LIMITED, HYDERABAD.



NOTE:

1. EMBOSSED BOTTOM (24 SWG/0.63TH GALVANIZED SHEET)
2. REINFORCEMENT HAT SECTIONS 90mm WIDTH 4 NOS.(24 SWG/0.63TH GALVANIZED SHEET)
3. BOTTOM LEGS 2 NOS (50 WIDTH HAT SECTION 24 SWG/0.63TH GALVANIZED SHEET)
4. REINFORCEMENT HAT SECTIONS 90mm WIDTH 2 NOS.(24 SWG/0.63TH GALVANIZED SHEET)
5. TOP COVER CORNER PIECE 4 NOS. (24 SWG/0.63TH GALVANIZED SHEET)
6. BOX CORNER PIECE 8 NOS. (24 SWG/0.63TH GALVANIZED SHEET)
7. PARTITION WALL 4 NOS WITH FOLDED EDGES FOR STRENGTH(24 SWG/0.63TH GALVANIZED SHEET)
8. ONLY SELF FABRICATED PADLOCK (18 SWG/1.3TH GI SHEET) 2 SETS, TYPE 8 GI RIVETS 4 NOS. ARE TO BE USED ON EACH PAD LOCK SIDE (COMMERCIAL PAD LOCKS ARE NOT TO BE USED)
9. ARE TO BE USED ON EACH HOOK SIDE (COMMERCIAL PAD LOCKS ARE NOT TO BE USED)
10. 10 SWG GALVANIZED WIRE TO BE USED ALL AROUND THE TOP COVER
11. HANDLE PLATE 4 NOS. (18 SWG/1.3TH GALVANIZED SHEET)TYPE 8 GI RIVETS 6 NOS. ARE TO BE USED ON EACH PLATE
12. TYPE 8 GI RIVETS 4 NOS ARE TO BE USED ON EACH SECTION
13. ANGLE STIFFENERS 4 NOS. ARE TO BE USED ON EACH SECTION
14. TYPE 6 GI RIVETS 4 NOS. ARE TO BE USED ON EACH STIFFENER
15. BUILT IN HINGES 3 NOS. WIDTH 40mm X 80mm LENGTH DOUBLE FOLDED
16. (24 SWG/0.63TH GALVANIZED SHEET) TYPE 8 GI RIVETS 2 NOS ARE TO BE USED ON EACH HINGE
17. WITH END FLANGES FOLDED AND RIVETED
18. HANDLE(90° OPEN) 4 NOS. 8mm MS ROD ONLY TO BE USED.HANDLES ARE TO BE MACHINE BENT WITH BOTH ENDS TOUCHING EACH OTHER AND BRIGHT GALVANIZED.
19. STOPPERS SHOULD BE STRONG AND WELL RIVETED (18 SWG/1.3TH GALVANIZED SHEET)
20. TYPE 8 GI RIVETS 3 NOS ARE REQUIRED ON TWO SIDES
21. 16. REINFORCED SLEEVE (NYLON/BLACK) 800 ID X 180 OD X 70 LONG 4 NOS.

GENERAL INSTRUCTIONS

1. TOP & BOTTOM MADE OUT OF SINGLE PIECE EXCEPT SIDE COVERS
2. NO PROJECTION SHOULD COME BEYOND THE INSIDE DIMENSIONS
3. GIVEN IN DRAWING, MAINTAIN DIMENSIONS PRECISELY.
4. USE 18 SWG/0.63TH GALVANIZED SHEET OF 1814/1814/1814 MAKE ONLY
5. WEIGHT OF THE BOX IS 20± 0.5KG.
6. FOR SCREEN PRINTING DETAILS REFER DRG.NO.F01061-A3
7. GALVANIZING PLATING SHOULD BE BRIGHT.
8. MINIMUM OF 20 u GALVANIZING PLATING THICKNESS SHOULD BE DONE ON PAD LOCKS AND HANDLES

S.NO.	TYPE & GI RIVETS	QTY
1	TYPE 8 GI RIVETS	48
2	TYPE 6 GI RIVETS	148
3	TYPE 10 AL RIVETS	8

S.NO.	TITLE	DRG.NO.	S.NO.	REV.	ISSUED FOR	DATE	APPD.

SCALE	PROJECTION	DRN	SARALA	DGN.
N T S				
ALL DIMENSIONS ARE IN MM UNLESS STATED OTHERWISE				
FULL NOS. = ±3				
GENERAL TOLERANCE				
2 DEC.PLACE =				
1 DEC.PLACE = ±1				
ANGLES = ±1				

TITLE	DRG.NO.
BALLOT UNIT (EVM - MARK V)	F01060-A3
BULK CARRYING CASE	

REV.	NO.	DATE	BY	CHKD.	ISSUED FOR	DATE	APPD.
1		13.06.13					
2		13.06.13					

MATERIAL	FINISH	NO. OFF
24 SWG / 0.63 TH GALVANIZED SHEET	---	1

REV.	NO.	DATE	BY	CHKD.	ISSUED FOR	DATE	APPD.
1		13.06.13					
2		13.06.13					

REV.	NO.	DATE	BY	CHKD.	ISSUED FOR	DATE	APPD.
1		13.06.13					
2		13.06.13					

REV.	NO.	DATE	BY	CHKD.	ISSUED FOR	DATE	APPD.
1		13.06.13					
2		13.06.13					

REV.	NO.	DATE	BY	CHKD.	ISSUED FOR	DATE	APPD.
1		13.06.13					
2		13.06.13					

REV.	NO.	DATE	BY	CHKD.	ISSUED FOR	DATE	APPD.
1		13.06.13					
2		13.06.13					

REV.	NO.	DATE	BY	CHKD.	ISSUED FOR	DATE	APPD.
1		13.06.13					
2		13.06.13					

REV.	NO.	DATE	BY	CHKD.	ISSUED FOR	DATE	APPD.
1		13.06.13					
2		13.06.13					

REV.	NO.	DATE	BY	CHKD.	ISSUED FOR	DATE	APPD.
1		13.06.13					
2		13.06.13					

REV.	NO.	DATE	BY	CHKD.	ISSUED FOR	DATE	APPD.
1		13.06.13					
2		13.06.13					

REV.	NO.	DATE	BY	CHKD.	ISSUED FOR	DATE	APPD.
1		13.06.13					
2		13.06.13					

REV.	NO.	DATE	BY	CHKD.	ISSUED FOR	DATE	APPD.
1		13.06.13					
2		13.06.13					

REV.	NO.	DATE	BY	CHKD.	ISSUED FOR	DATE	APPD.
1		13.06.13					
2		13.06.13					

REV.	NO.	DATE	BY	CHKD.	ISSUED FOR	DATE	APPD.
1		13.06.13					
2		13.06.13					

REV.	NO.	DATE	BY	CHKD.	ISSUED FOR	DATE	APPD.
1		13.06.13					
2		13.06.13					

REV.	NO.	DATE	BY	CHKD.	ISSUED FOR	DATE	APPD.
1		13.06.13					
2		13.06.13					

REV.	NO.	DATE	BY	CHKD.	ISSUED FOR	DATE	APPD.
1		13.06.13					
2		13.06.13					

REV.	NO.	DATE	BY	CHKD.	ISSUED FOR	DATE	APPD.
1		13.06.13					
2		13.06.13					

REV.	NO.	DATE	BY	CHKD.	ISSUED FOR	DATE	APPD.
1		13.06.13					
2		13.06.13					

REV.	NO.	DATE	BY	CHKD.	ISSUED FOR	DATE	APPD.
1		13.06.13					
2		13.06.13					

REV.	NO.	DATE	BY	CHKD.	ISSUED FOR	DATE	APPD.
1		13.06.13					
2		13.06.13					

REV.	NO.	DATE	BY	CHKD.	ISSUED FOR	DATE	APPD.
1		13.06.13					
2		13.06.13					

REV.	NO.	DATE	BY	CHKD.	ISSUED FOR	DATE	APPD.
1		13.06.13					
2		13.06.13					

REV.	NO.	DATE	BY	CHKD.	ISSUED FOR	DATE	APPD.
1		13.06.13					
2		13.06.13					

REV.	NO.	DATE	BY	CHKD.	ISSUED FOR	DATE	APPD.
1		13.06.13					
2		13.06.13					

REV.	NO.	DATE	BY	CHKD.	ISSUED FOR	DATE	APPD.
1		13.06.13					
2		13.06.13					

REV.	NO.	DATE	BY	CHKD.	ISSUED FOR	DATE	APPD.
1		13.06.13					
2		13.06.13					

REV.	NO.	DATE	BY	CHKD.	ISSUED FOR	DATE	APPD.
1		13.06.13					
2		13.06.13					

REV.	NO.	DATE	BY	CHKD.	ISSUED FOR	DATE	APPD.
1		13.06.13					
2		13.06.13					

REV.	NO.	DATE	BY	CHKD.	ISSUED FOR	DATE	APPD.
1		13.06.13					
2		13.06.13					

REV.	NO.	DATE	BY	CHKD.	ISSUED FOR	DATE	APPD.
1		13.06.13					
2		13.06.13					

REV.	NO.	DATE	BY	CHKD.	ISSUED FOR	DATE	APPD.
1		13.06.13					
2		13.06.13					

REV.	NO.	DATE	BY	CHKD.	ISSUED FOR	DATE	APPD.
1		13.06.13					
2		13.06.13					

REV.	NO.	DATE	BY	CHKD.	ISSUED FOR	DATE	APPD.
1		13.06.13					
2		13.06.13					

REV.	NO.	DATE	BY	CHKD.	ISSUED FOR	DATE	APPD.
1		13.06.13					
2		13.06.13					

REV.	NO.	DATE	BY	CHKD.	ISSUED FOR	DATE	APPD.
1		13.06.13					
2		13.06.13					

REV.	NO.	DATE	BY	CHKD.	ISSUED FOR	DATE	APPD.
1		13.06.13					
2		13.06.13					

REV.	NO.	DATE	BY	CHKD.	ISSUED FOR	DATE	APPD.
1		13.06.13					
2		13.06.13					

REV.	NO.	DATE	BY	CHKD.	ISSUED FOR	DATE	APPD.
1		13.06.13					
2		13.06.13					

REV.	NO.	DATE	BY	CHKD.	ISSUED FOR	DATE	APPD.
1		13.06.13					
2		13.06.13					

REV.	NO.	DATE	BY	CHKD.	ISSUED FOR	DATE	APPD.
1		13.06.13					
2		13.06.13					

REV.	NO.	DATE	BY	CHKD.	ISSUED FOR	DATE	APPD.
1		13.06.13					
2		13.06.13					

REV.	NO.	DATE	BY	CHKD.	ISSUED FOR	DATE	APPD.
1		13.06.13					
2		13.06.13					

REV.	NO.	DATE	BY	CHKD.	ISSUED FOR	DATE	APPD.
1		13.06.13					
2		13.06.13					

REV.	NO.	DATE	BY	CHKD.	ISSUED FOR	DATE	APPD.
1		13.06.13					
2		13.06.13					

REV.	NO.	DATE	BY	CHKD.	ISSUED FOR	DATE	APPD.
1		13.06.13					
2		13.06.13					

REV.	NO.	DATE	BY	CHKD.	ISSUED FOR	DATE	APPD.
1		13.06.13					
2		13.06.13					

REV.	NO.	DATE	BY	CHKD.	ISSUED FOR	DATE	APPD.
1		13.06.13					
2		13.06.13					

REV.	NO.	DATE	BY	CHKD.	ISSUED FOR	DATE	APPD.
1		13.06.13					
2		13.06.13					

REV.	NO.	DATE	BY	CHKD.	ISSUED FOR	DATE	APPD.
1		13.06.13					
2		13.06.13					

REV.	NO.	DATE	BY	CHKD.	ISSUED FOR	DATE	APPD.
1		13.06.13					
2		13.06.13					

REV.	NO.	DATE	BY	CHKD.	ISSUED FOR	DATE	APPD.
1		13.06.13					
2		13.06.13					

REV.	NO.	DATE	BY	CHKD.	ISSUED FOR	DATE	APPD.
1		13.06.13					
2		13.06.13					

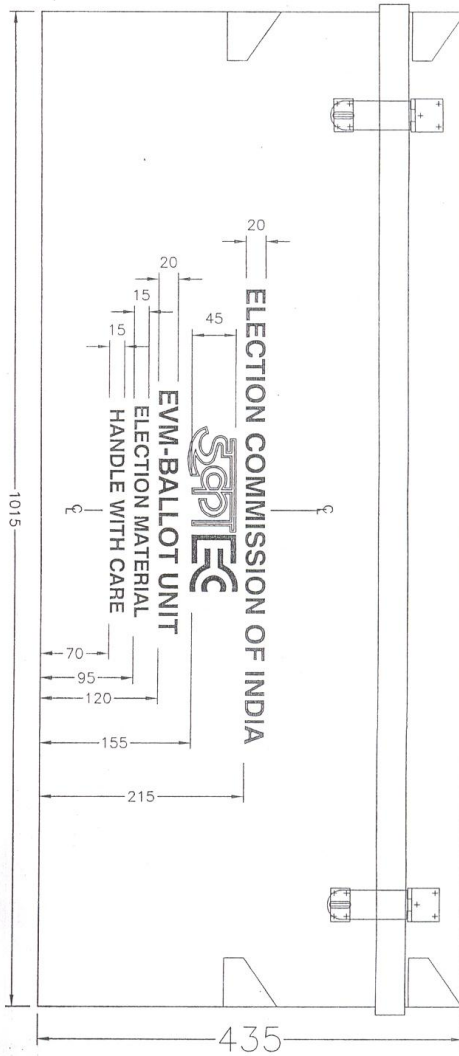
REV.	NO.	DATE	BY	CHKD.	ISSUED FOR	DATE	APPD.
1		13.06.13					
2		13.06.13					

REV.	NO.	DATE	BY	CHKD.	ISSUED FOR	DATE	APPD.
1		13.06.13					
2		13.06.13					

THIS DISCLOSURE IS THE PROPERTY OF THE ELECTRONICS CORPORATION OF INDIA LIMITED. SUBJECT TO RETURN UPON DEMAND AND WITH THE UNDERSTANDING THAT IT IS NOT TO BE REPRODUCED, COPIED OR USED DIRECTLY OR INDIRECTLY IN ANY WAY DETRIMENTAL TO THE INTERESTS OF THE ELECTRONICS CORPORATION OF INDIA LIMITED, HYDERABAD.

NOTE:

1. ALL LETTERS ARE UNIVERSAL BOLD
2. PRINTING TO BE DONE IN BLACK EXCEPT "ELECTION MATERIAL".
3. ELECTION MATERIAL TO BE IN RED COLOUR
4. GOOD QUALITY INK SHOULD BE USED FOR PRINTING. PRINTING SHOULD BE CLEAR AND DISTINCT, WITHOUT SMEARING OF PAINT AFTER PRINTING
5. FOR OTHER DETAILS REFER DRG. F01060-A3
6. LACQUER COATING ON PRINTING SIDE

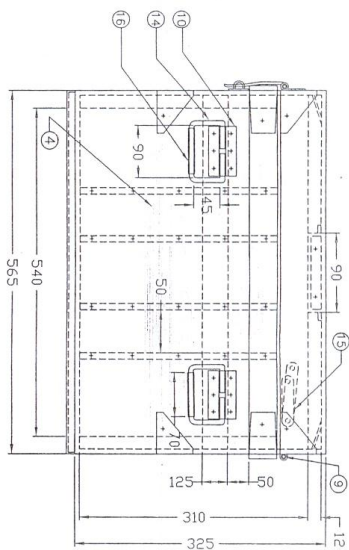


S.NO	DESCRIPTION	DATE	APPD.

TITLE		BALLOT UNIT (EVM - MARK V)	
PRINTING ON BULK CARRYING CASE - BU			
SCALE = N T S			
ALL DIMENSIONS ARE IN MM UNLESS STATED OTHERWISE			
FULL NOS. = 13.0 1 DEC. PLACE = 1.0			
2 DEC. PLACE = 1.0			
ANGLES = 1.0			
PROJECTION			
DRG. NO.			
S.NO.			
REV.			
ISSUED FOR			
DATE			
APPD.			
DRN.			
SARALA			
DON.			
DRG. CHD.			
DATE			
13.06.13			
APPD.			
FINISH			
AS PER NOTE: 6			
NO. OFF			
1			
DRG. NO.			
E01061-A3			
REV. NO.			
0			
SHEET 1 OF 1			

Technical drawing of a rectangular table, oriented vertically. The drawing includes the following dimensions and callouts:




- Dimensions:**
 - Top horizontal edge: 12
 - Left vertical edge: 100
 - Right vertical edge: 187
 - Bottom horizontal edge: 12
 - Inner vertical distance (left): 50
 - Inner vertical distance (right): 50
 - Inner horizontal distance (top): 405
 - Inner horizontal distance (bottom): 187
 - Overall width (left): 835
 - Overall width (right): 90
 - Overall height (left): 610
 - Overall height (right): 100
- Callouts:**
 - 1: Points to the top horizontal edge.
 - 2: Points to the left vertical edge.
 - 3: Points to the right vertical edge.
 - 4: Points to the bottom horizontal edge.
 - 5: Points to the inner vertical distance on the right.
 - 6: Points to the inner horizontal distance on the bottom.
 - 7: Points to the inner horizontal distance on the top.
 - 8: Points to the inner vertical distance on the left.



- NOTE:
1. EXPOSED BOTTOM (24 SWG/0.63th GALVANIZED SHEET)
2. REINFORCEMENT HAT SECTIONS 50mm WIDTH 2 NOS./24 SWG/0.63th GALVANIZED SHEET (FRONT 2NOS AND BACK 2NOS) TYPE 6 G1 RIVETS 8 NOS. ARE TO BE USED ON EACH HAT SECTION
3. BOTTOM LEGS 2 NOS.50 MM WIDTH HAT SECTION (24 SWG/0.63th GALVANIZED SHEET)
4. TOP CORNER PLATE 2 NOS. ARE TO BE USED ON EACH HAT SECTION
5. REINFORCEMENT HAT SECTIONS 50mm width 4 NOS./24 SWG/0.63th GALVANIZED SHEET)
6. RIGHT SIDE 2 NOS. AND LEFT SIDE 2 NOS. TYPE 6 G1 RIVETS 8 NOS. ARE TO BE USED ON EACH HAT SECTION.
7. TOP CORNER PLATE 2 NOS. (24 SWG/0.63th GALVANIZED SHEET) TYPE 6 G1 RIVETS 2 NOS. ARE TO BE USED ON EACH CORNER PLATE
8. BOY CORNER PLATE 8 NOS. (24 SWG/0.63th GALVANIZED SHEET) TYPE 6 G1 RIVETS 2 NOS. ARE TO BE USED ON EACH CORNER PLATE
9. PARTITION WALL 1 NO WITH FOLDED EDGES FOR STRENGTH/24 SWG/0.63th GALVANIZED SHEET)
10. TYPE 6 G1 RIVETS 4 NOS. ARE TO BE USED ON EACH END 2 NOS.
11. ONLY SELF FABRICATED PADLOCK (18 SWG/1.3th G1 SHEET) 2 SETS TYPE 6 G1 RIVETS 4 NOS. ARE TO BE USED ON EACH PAD LOCK SIDE AND TYPE 10 AL RIVETS 4 NOS. ARE TO BE USED ON EACH HOOK SIDE (COMMONER. PAD LOCKS ARE NOT TO BE USED)
12. 10 SWG GALVANIZED WIRE ONLY TO BE USED ALL AROUND THE TOP COVER
13. HANDLE PLATE 4 NOS. (24 SWG/0.63th GALVANIZED SHEET) TYPE 6 G1 RIVETS 4 NOS. ARE TO BE USED ON EACH PLATE
14. ANGLE STIFFENERS 4 NOS. (24 SWG/0.63th GALVANIZED SHEET)
15. TYPE 6 G1 RIVETS 4 NOS. ARE TO BE USED ON EACH STIFFENER
16. BUILT IN RIVETS 3 NOS. WIDTH 40mm x 80mm LENGTH DOUBLE FOLDED (24 SWG/0.63th GALVANIZED SHEET) TYPE 6 G1 RIVETS 2 NOS. ARE TO BE USED ON EACH RIVNET
17. REINFORCEMENT HAT SECTIONS 50mm WIDTH 2 NOS./24 SWG/0.63th GALVANIZED SHEET) WITH END PLATES FOLDED TYPE 6 G1 RIVETS 12+12 NOS. AND TYPE 6 G1 RIVETS 4 NOS AT CROSSING AREA ARE TO BE USED
18. HANDLE/DR OPEN) 4 NOS. 8.0P M5 NUT ONLY IS TO BE USED./HANDLES ARE TO BE MACHINE BENT WITH BOTH ENDS TOUCHING EACH OTHER AND BRIGHT GALVANIZED.
19. STOPPERS SHOULD BE STRONG AND WELL RIVETED (18 SWG/1.3 G1 SHEET)
20. TYPE 8 G1 RIVETS 3 NOS ARE REQUIRED ON TWO SIDES
21. REINFORCED STEEL W/IRON (BLACK) 50 x 10 x 100 OR 50 x 100 x 10 TO LONG 4 NOS

1. TOP & BOTTOM MADE OUT OF SINGLE PIECE EXCEPT SIDE COVERS
2. NO PROJECTION SHOULD COME BEYOND THE INSIDE DIMENSIONS
3. GIVEN IN DRAWING, MAIN/IN DIMENSIONS PRECISELY.
4. USE OF SELECTED MATERIALS (GALVANIZED SHEET OF TATA/JINDAL/SAI) MADE ONLY.
5. WEIGHT OF THE BOX 15 +/- 0.5kg.
6. FOR SCREEN PRINTING DETAILS, REFER DRG.NO.02-059-A3
7. GALVANIZED PLATING SHOULD BE BRIGHT.
8. MINIMUM OF 20 u GALVANIZED PLATING THICKNESS SHOULD BE DONE ON PADLOCKS AND HANDLES

S.NO	DESCRIPTION	DATE	APPD.

SCALE =		N T S		PROJECTION			
ALL DIMENSIONS ARE IN MM UNLESS STATED OTHERWISE GENERAL TOLERANCE FULL NOS. = ± 0.3 1 DEC. PLACE = ± 1 ANGLES =							
 ELECTRONICS CORPORATION OF INDIA LIMITED, INSTRUMENTS & SYSTEMS GROUP HYDERABAD - 500 062							
TITLE		CONTROL UNIT (EVM MARK- V)					
S.NO.		TITLE		DRG. NO.		S.NO	
S.NO		REV.		NO.			
REFERENCE DRAWINGS				ISSUES			
ISSUED FOR		DATE		APPD.			
DRG. NO.		SURESH		DGN.			
DRG. CHD.		e s s h o		DGN. CHD.			
DATE		11.06.13		APPD.			
MATERIAL		AS PER NOTES					
FINISH		AS PER NOTES		NO. OF		1	
REV. NO. 0		F01058-A3					
SHEET 1 OF 1							

3	TYPE 8 GI RIVETS	48
2	TYPE 6 GI RIVETS	152
1	TYPE 10 AL RIVETS	8
SL.NO.	DESCRIPTION	QTY

STP

ELECTRONICS CORPORATION OF INDIA LIMITED
INSTRUMENTS & SYSTEMS GROUP
HYDERABAD - 500 062

TITLE	CONTROL UNIT (EVM MARK - V)	BULK CARRYING CASE-CU
1	1	1
2	2	2
3	3	3
4	4	4
5	5	5
6	6	6
7	7	7
8	8	8
9	9	9
10	10	10
11	11	11
12	12	12
13	13	13
14	14	14
15	15	15
16	16	16
17	17	17
18	18	18
19	19	19
20	20	20
21	21	21
22	22	22
23	23	23
24	24	24
25	25	25
26	26	26
27	27	27
28	28	28
29	29	29
30	30	30
31	31	31
32	32	32
33	33	33
34	34	34
35	35	35
36	36	36
37	37	37
38	38	38
39	39	39
40	40	40
41	41	41
42	42	42
43	43	43
44	44	44
45	45	45
46	46	46
47	47	47
48	48	48
49	49	49
50	50	50
51	51	51
52	52	52
53	53	53
54	54	54
55	55	55
56	56	56
57	57	57
58	58	58
59	59	59
60	60	60
61	61	61
62	62	62
63	63	63
64	64	64
65	65	65
66	66	66
67	67	67
68	68	68
69	69	69
70	70	70
71	71	71
72	72	72
73	73	73
74	74	74
75	75	75
76	76	76
77	77	77
78	78	78
79	79	79
80	80	80
81	81	81
82	82	82
83	83	83
84	84	84
85	85	85
86	86	86
87	87	87
88	88	88
89	89	89
90	90	90
91	91	91
92	92	92
93	93	93
94	94	94
95	95	95
96	96	96
97	97	97
98	98	98
99	99	99
100	100	100

F01058-A3

REV.NO.	0					SHT. 1 OF 1
---------	---	--	--	--	--	-------------

-IT.1 OF 1

